

## PLAYING MUSIC

Once the unit has been installed insert your SD card or USB stick, turn the motorcycle ignition to the ON or Accessory position and select CD on the control panel. The Goldwing video panel will display the current folder (it will display "CD" on the screen) and track that is playing. In select following photo, it is playing the 4<sup>th</sup> song on the first CD, and has played 5 minutes and 23 seconds of that song.



If your Goldwing is equipped with the Honda Navigation system, you may change your display and it will appear like the photo below. Notice that the disc and track information is displayed in the lower left hand corner of the navigation screen



All images are used for illustration purposes only, your individual bikes display/controls may differ.



### HGW-IPD-V1P/A Digital MP3 player

To change tracks, press the Tune/Disc handlebar button once, either up or down.

To change folders, press and hold the Tune/Disc button for 2 seconds, either up or down.

### VSS Enhanced Audio System

To enhance the sound quality select ON at the VSS switch on the end of the unit, this will in most cases boost the audio level, you may need to adjust the AMB setting on you OEM radio to fully appreciate the difference.

**NOTE:** Both units support Folder/Playlist repeat. At the end of a folder, they will repeat that folder/playlist starting with the first track. To change to the next folder/playlist, you must use the Tune/Disc control.

The ASEL-RPT-RDM button on the audio control panel is not supported it is used to access the AUX port on the unit, this function is not supported by the OEM Goldwing audio system or BikeMP3.com.

[WWW.BikeMP3.COM](http://WWW.BikeMP3.COM)

Phone 702-465-4066

Fax 866-537-6999

P.O. Box 2243  
Bartow, Florida 33831-2243

[Sales@bikemp3.com](mailto:Sales@bikemp3.com)

**BikeMP3.COM**

HGW-IPD-V1P Digital MP3 player

HGW-IPD-V1PA Enhanced Audio

Phone 702-465-4066

Fax 866-537-6999

P.O. Box 2243  
Bartow, Florida 33831-2243

[Sales@bikemp3.com](mailto:Sales@bikemp3.com)





## INSTALLATION INSTRUCTIONS

PLEASE MAKE SURE THAT YOU TURN OFF YOUR IGNITION AND REMOVE YOUR KEY BEFORE YOU START THIS INSTALLATION, IT IS ALSO A GOOD IDEA TO DISCONNECT THE BIKE'S BATTERY.

OUR UNITS ARE NOT WATERPROOF, CARE SHOULD BE TAKEN WHEN SELECTING THE MOUNTING LOCATION TO AVOID WATER AND OTHER DAMAGE.

### Models Covered

#### HGW-IPD-V1P Digital MP3 player

#### HGW-IPD-V1PA Enhanced Audio

Note: Both units plug into the connector that is normally used for the Honda Goldwing CD changer. You cannot use this unit and the CD changer simultaneously. Only one device can be installed at a time.

Installation of both units in the trunk is quick and easy. It only requires a 6 mm hex head wrench for removing the saddle from the motorcycle. Depending on where you choose to install it, there may be no drilling of holes or cutting of the plastic body components.

To access the connector, you will need to remove the saddle from your GL1800. The connector for the CD changer is located next to the frame cross member in a black rubber boot.

Plug the provided MP3 player cable into the vacant CD changer connector and make sure you feel a firm click. You may wish to wrap the connection with electrical tape to protect it from the elements.

**NOTE:** Ensure that you locate the connector so that it is not crushed when you replace the saddle.



It is up to the individual consumer to decide where to mount the unit, but we found that locating the unit in the trunk provides the most security and maximum ease of installation. Simply run the cable behind the passenger seat, into the trunk, and secure the player to the trunk lid or side wall using hook and loop or double sided sticky tape.

In the installation shown here, a small notch was cut behind the rubber trunk lid seal to prevent the trunk lid from crushing the cable. You may wish to secure the cable to the existing cables using zip ties to keep it secured so it does not get pinched by the trunk hinges.

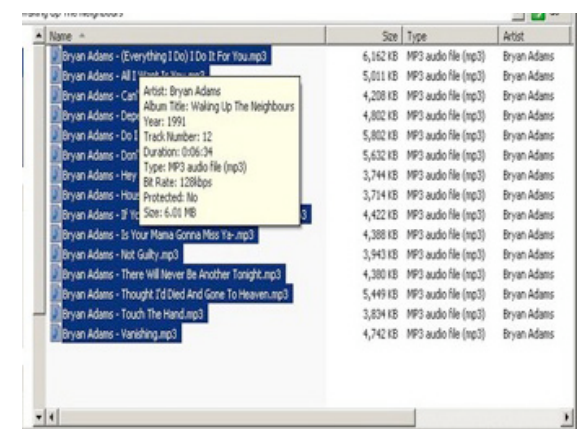
This location keeps the player clean and dry, while providing easy access for changing the SD or USB modules. You may also choose to locate the player in the lower trunk compartment where the CD changer would normally be located.

Once installation of the unit in the desired location is complete plug the end of the connection cable firmly into the unit.

Depending on the version of the Honda audio system that is installed on your bike the unit may or may not pause when you select another audio option after using the CD this is normal behavior and due to the programming of the Honda audio system this is not a fault in the MP3 player, an optional switch is available for purchase that will cause the unit to pause.

**Note For SD Card Users To Insert The Card Push It Into The Slot Until You Feel The Spring Depress The Allow It To Pop Back And Lock In, To remove Push The Card In And It Will Pop Out, DO NOT PULL THE CARD OUT DAMAGE MAY OCCUR AND VOID YOUR WARRANTY**

**Caution!!!** Care should be exercised to ensure that items stored in the trunk do not make contact with the MP3 player when the trunk lid is fully closed!!



## PREPARING MEDIA

**BOTH SD AND USB MEDIA MUST BE FORMATTED TO FAT OR FAT 32 SINGLE PARTITION, SOME USB DRIVES COME FROM THE FACTORY WITH A "BOOTABLE" PARTITION THIS MUST BE DELETED PLEASE FOLLOW THE INSTRUCTIONS THAT CAME WITH YOUR DRIVE TO DO THIS. CERTAIN USB DEVICES ARE SUPPLIED FROM THE FACTORY WITH A MENU SYSTEM THIS MUST BE REMOVED PRIOR TO FORMATTING PLEASE REFER TO THE MANUFACTURERS INSTRUCTIONS.**

Songs can be transferred to your SD card or USB drive using Windows Explorer, Do Not Use Windows Media Player. The units are capable of playing music in MP3 or WMA formats, and will support up to 999 "discs" or folders, each with up to 999 songs in them although the OEM display may not count this high the unit will still cycle through all the files and folders

\*\*\* NOTE: For recommended operation you MUST place at least 1 song in the "root" directory of the SD card of USB device! The player will not function correctly if this is not done. The root directory counts as CD1, your first folder will be CD2 and so on.

The HGW-IPD-V1P/A player will play the songs in the order they were copied to the memory card. In the attached photo, we have selected all the songs in this folder. Simply click and drag by placing your mouse pointer over the first song at the top of the list, and the songs will be copied to your memory card in the order that is displayed.

**NOTE:** The player will support up to 999 folders & 999 songs in each folder, however the Goldwing audio system may display "NO DISC" or start counting from "DISC 1" again when you change to folders greater than 7 or 9, this is a limitation of the OEM audio system and not the unit.